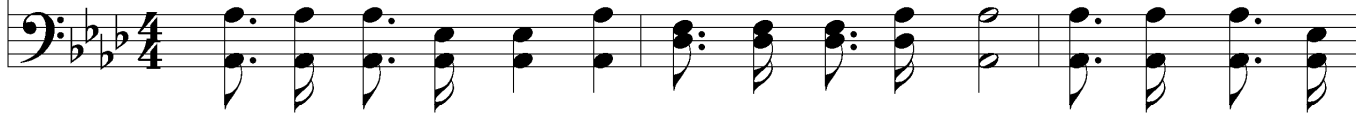


SEND THE NEWS

Charles H. Gabriel



Chorus



SEND THE NEWS

The musical score for "SEND THE NEWS" is presented in two systems. Each system consists of a treble clef staff and a bass clef staff, both in the key of B-flat major (two flats) and 4/4 time. The first system features a treble staff with a melodic line of eighth and quarter notes, and a bass staff with a harmonic accompaniment of chords and eighth notes. The second system continues the melody and accompaniment, concluding with a double bar line. The notation includes various note values, rests, and chordal structures typical of a hymn accompaniment.