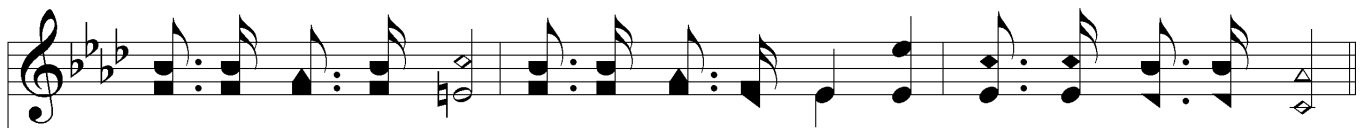


SEND THE NEWS

Charles H. Gabriel



Chorus



SEND THE NEWS

The musical score for "Send the News" is presented in two systems. Each system consists of a treble clef staff and a bass clef staff, both in a key signature of three flats (B-flat, E-flat, A-flat) and a common time signature. The first system features a melodic line in the treble staff with a long note on the second measure, followed by a series of eighth and sixteenth notes. The bass staff provides a harmonic accompaniment with chords and moving lines. The second system continues the melody and accompaniment, ending with a double bar line. The notation includes various note values, rests, and dynamic markings.