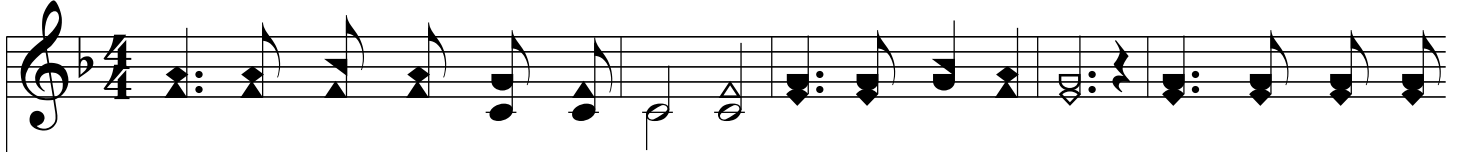
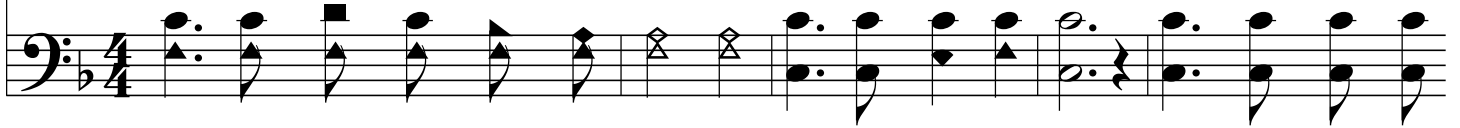


# ¿Pensaste orar? *Did You Think To Pray?*

F/A - MI



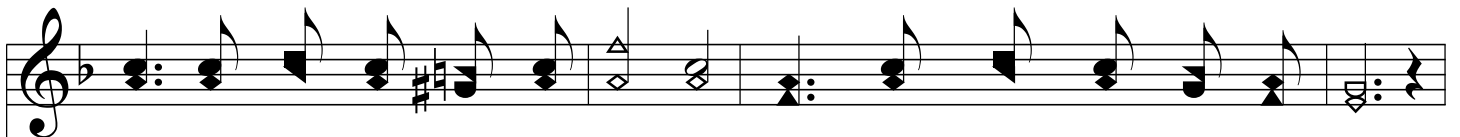
1. ¿Con fer - vor o - rar pen - sas - te al a - ma - ne - cer? ¿Su - pli - cas - te  
 2. ¿Con fer - vor o - rar pen - sas - te al en - fu - re - cer? ¿No pe - dis - te,  
 3. ¿Con fer - vor o - rar pen - sas - te al en - tris - te - cer? Cuan - do lle - no  
*1. Ere you left your room this morn-ing, Did you think to pray? In the name of  
 2. When your heart was filled with an - ger, Did you think to pray? Did you plead for  
 3. When sore tri - als came up - on you, Did you think to pray? When your soul was*



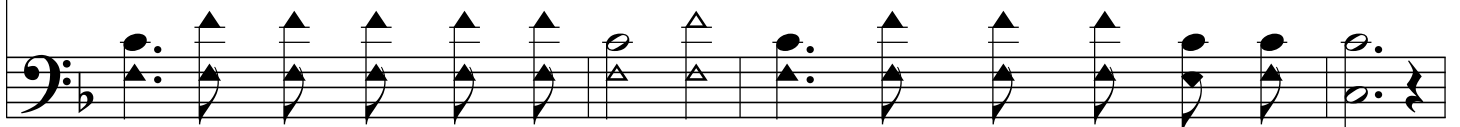
por la gra - cia y am - pa - ro es - te di - a en tu o - ra - cion?  
 mi her - ma - no, que, al ver - te o - fen - di - do, die - ras el per - don?  
 de pe - sa - res, ¿a tu Dios le su - pli - cas - te al a - ma - ne - cer?  
*Christ, our Sav - ior, Did you sue for lov - ing fa - vor, As a shield to - day?  
 grace, my broth - er, That you might for - give an - oth - er Who had crossed your way?  
 bowed in sor - row, Balm of Gil - ead did you bor - row At the gates of day?*



## *Coro/Chorus*



¿Qué re - po - so al can - sa - do es la hu - mil - de o - ra - cion!  
*O how pray - ing rests the wea - ry! Prayer will change the night to day;*



**¿Pensaste orar?**  
***Did You Think To Pray?***

The image shows a musical score for the hymn '¿Pensaste orar?'. It consists of two staves: a treble clef staff on top and a bass clef staff on the bottom. The key signature has one flat (B-flat), and the time signature is 4/4. The melody is written in the treble staff, and the bass line is in the bass staff. The lyrics are written between the two staves.

Træ con - sue - lo al he - ri - do, paz al co - ra - zon.  
*So when life seems dark and drear - y, Don't for - get to pray.*