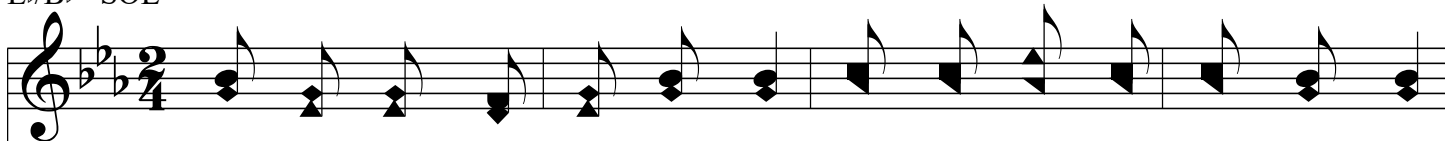


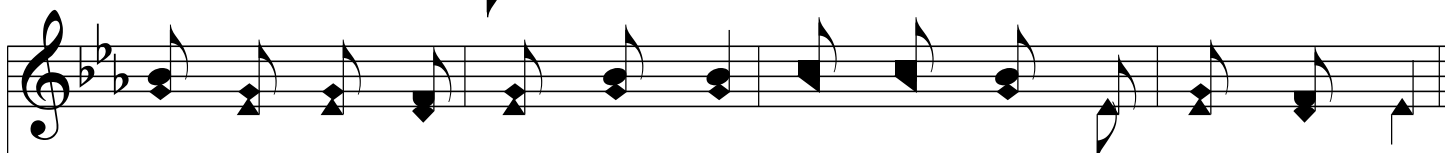
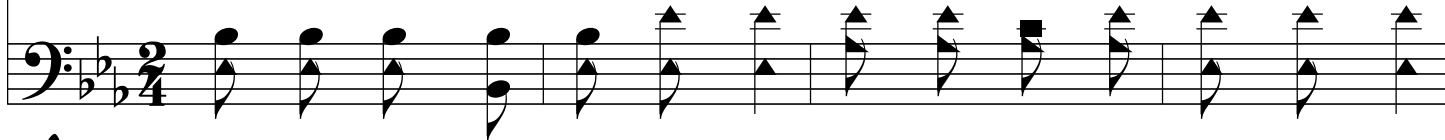
# Cristo me ama

## Jesus Loves Me

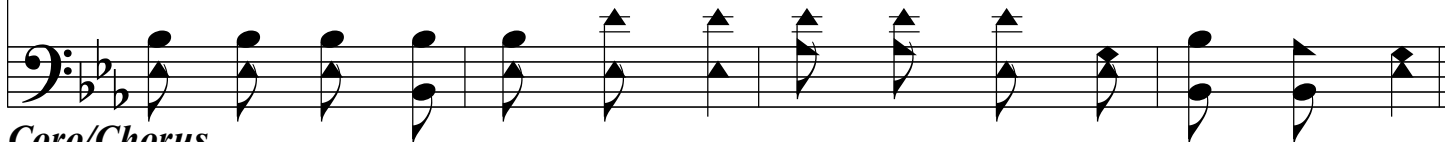
E♭/B♭ - SOL



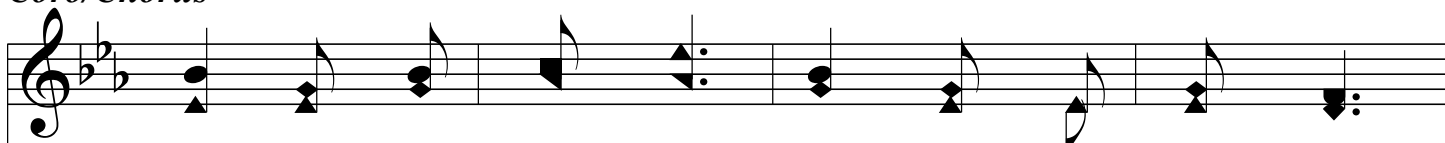
1. Cris - to me\_a - ma, bien lo sé, Su pa - la - bra me\_ha - ce ver,  
2. Cris - to me\_a - ma, pues mu - rió, Y el cie - lo me a - brió;  
3. Cris - to me\_a - ma - es ver - dad - Y me cui - da en su bon - dad,  
1. Je - sus loves me! this I know, For the Bi - ble tells me so;  
2. Je - sus loves me! He who died, Heav - en's gate to o - pen wide;  
3. Je - sus loves me! loves me still, Tho' I'm ver - y weak and ill;



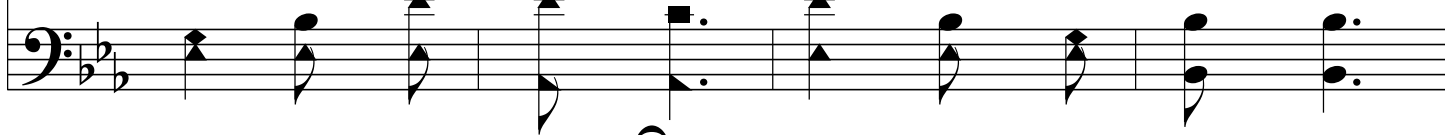
Que los ni - ños son de\_Aqu - él, Quien es nues - tro\_A - mi - go fiel.  
El mis cul - pas qui - ta - rá, Y la en - tra - da me da - rá.  
Cuan - do mue - ra, si soy fiel, Vi - vi - ré a - llá con Él.  
*Lit - tle ones to Him be - long, They are weak but He is strong.  
He will wash a - way my sin, Let His lit - tle child come in.  
From His shin - ing throne on high, Comes to watch me where I lie.*



### Coro/Chorus



Cris - to me a - ma, Cris - to me a - ma,  
Yes, Je - sus loves me; Yes, Je - sus loves me;



Cris - to me a - ma, La Bi - blia di - ce\_a - sí.  
Yes, Je - sus loves me; The Bi - ble tells me so.

