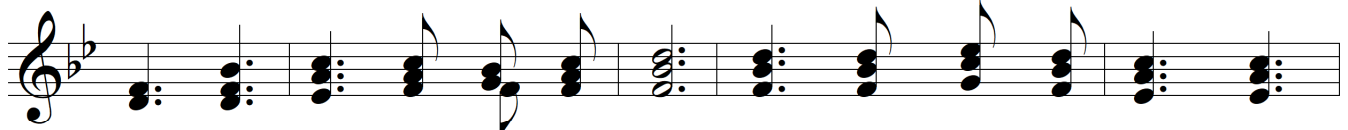


# Yield Not To Temptation



1. Yield not to temp - ta - tion, For yield - ing is sin; Each vic - t'ry will  
2. Shun e - vil com - pan - ions Bad lan - guage dis - dain; God's name hold in  
3. To him that o'er - comm - eth God giv - eth a crown; Thru faith we shall



help you Some oth - er to win; Fight man - ful - ly on - ward,  
rev - 'rence Nor take it in vain; Be thought - ful and ear - nest,  
con - quer, Tho' oft - en cast down; He, who is our Sav - ior,

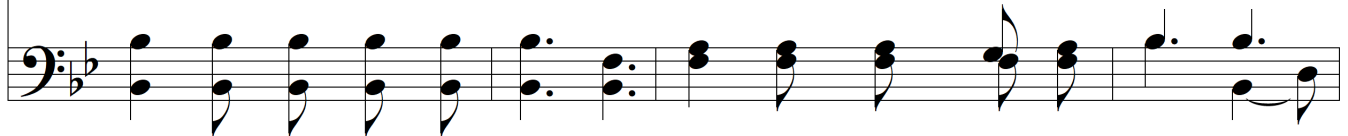


Dark pas - sions sub - due, Look ev - er to Je - sus: He will car - ry you thru.  
Kind heart - ed and true; Look ev - er to Je - sus: He will car - ry you thru.  
Our strength will re - new; Look ev - er to Je - sus: He will car - ry you thru.

## Chorus



Ask the Sav - ior to help you, Com - fort, strength - en, and keep you;



He is wil - ling to aid you, He will car - ry you thru.

