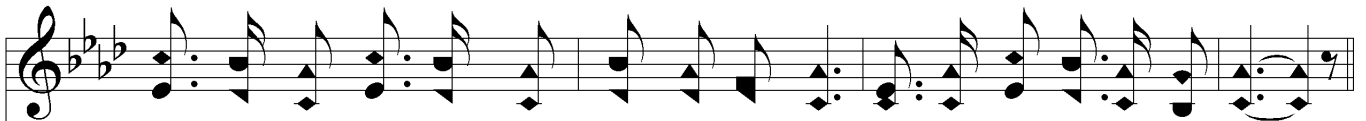


# Jesus Is Piloting Me



1. Sail - ing life's o - cean 'mid break - ers and foam, Je - sus is pi - lot-ing me;
2. Fear I no tem - pest, tho' threat'n-ing and dark, Je - sus is pi - lot-ing me;
3. Pleas - ant the voy - age when shin - eth the sun, Je - sus is pi - lot-ing me;
4. Fair is the morn - ing and bright is the day, Je - sus is pi - lot-ing me;
5. Trust to this Pi - lot your frail bark, my friend, Je - sus your pi - lot will be;



Sail - ing life's o - cean tow'rds heav - en and home, Je - sus is pi - lot-ing me.  
Safe o'er the track-less deep guides He my bark, Je - sus is pi - lot-ing me.  
Oh, what a meet-ing when sail - ing is done, Je - sus is pi - lot-ing me.  
Nev - er an - oth - er that know-eth the way, Je - sus is pi - lot-ing me.  
Trust Him to pi - lot you safe to the end, Je - sus your pi - lot will be.



## Chorus



Je - sus is pi - lot - ing me, Je - sus is pi - lot - ing me; Safe in - to



port my bark He will bring; Storm - clouds may hov - er, yet to Him I'll cling;



# Jesus Is Piloting Me

The image shows a musical score for the hymn "Jesus Is Piloting Me". It consists of two staves: a treble clef staff for the melody and a bass clef staff for the accompaniment. The key signature is one flat (B-flat major or D minor), and the time signature is 4/4. The melody is written in a simple, hymn-like style with eighth and quarter notes. The lyrics are: "He's the sure Pi - lot, His prais - es I'll sing; Je - sus is pi - lot - ing me." The word "Rit..." is written above the final measure of the melody, indicating a ritardando. The bass staff provides a simple harmonic accompaniment with chords and moving lines.

*Rit...*

He's the sure Pi - lot, His prais - es I'll sing; Je - sus is pi - lot - ing me.