

# Sweet Savior Mine



1. Sweet Sav - ior mine, so full, so free, Thy par-d'ning love has been to me;  
2. Sweet Sav - ior mine, Thy feet to kiss In ser - vice low is high - est bliss;  
3. Sweet Sav - ior mine, can I with - hold The tri - fling deed, the pal - try gold?

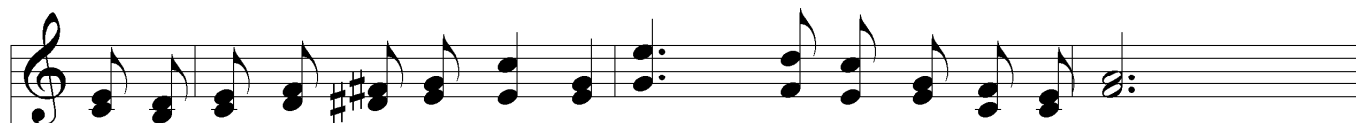


Were I pos - sessed of bound - less store, My heart would long to yield Thee more.  
Oh, give to me one glance of Thine, And pain for Thee is joy di - vine.  
Nay, low - ly at Thy feet I fall, Sweet Sav - ior mine, I give Thee all.

## Chorus



The world is naught a - part from Thee, sweet Sav - ior mine, And cruds are king - ly



fare for me since I am Thine; My life, my all, to Thee I give,  
My life, my all, to Thee I give, to Thee I give,



Sweet Sav - ior mine, for Thee to live. My life, my all, to Thee I  
My life, my all, to Thee I



# *Sweet Savior Mine*

give,  
give, to Thee I give, Sweet Sav - ior mine, for Thee to live.

The image shows a musical score for the hymn "Sweet Savior Mine". It consists of two staves: a treble clef staff at the top and a bass clef staff at the bottom. The treble staff begins with a treble clef, a key signature of one sharp (F#), and a common time signature (C). The melody starts with a quarter rest, followed by a quarter note G4, a quarter note A4, a quarter note B4, a quarter note C5, a quarter note B4, a quarter note A4, a quarter note G4, a quarter note F#4, a quarter note E4, a quarter note D4, and a half note C4. The bass staff begins with a bass clef and a common time signature (C). The bass line starts with a quarter note G2, a quarter note F#2, a quarter note E2, a quarter note D2, a quarter note C2, a quarter note B1, a quarter note A1, a quarter note G1, a quarter note F#1, a quarter note E1, a quarter note D1, and a half note C1. The lyrics are written below the notes: "give, give, to Thee I give, Sweet Sav - ior mine, for Thee to live." The word "Sweet" is positioned above the treble staff, and "Sav - ior" is split across the treble and bass staves.