

Looking Unto Jesus Makes It Right

E \flat



1. When fierce the winds are blow - ing, and dark the clouds o'er head, Look - ing un - to
2. When doubts are all a - round, and the "feel - ings" all are gone, Look - ing un - to
3. When by and by the riv - er flows dark - ly, just be - fore, Look - ing un - to



Je - sus makes it right, all right; O look not at the tem - pest, but
Je - sus makes it right, all right; We're walk - ing not by sight, but by
Je - sus makes it right, all right; The hosts of God will meet me, and



D. S. - 'Tis look - ing un - to Je - sus turns

Fine



at the Lord in - stead! Look - ing un - to Je - sus makes it right, all right.
faith we trav - el on, Look - ing un - to Je - sus makes it right, all right.
bear me safe - ly o'er, Look - ing un - to Je - sus makes it right, all right.

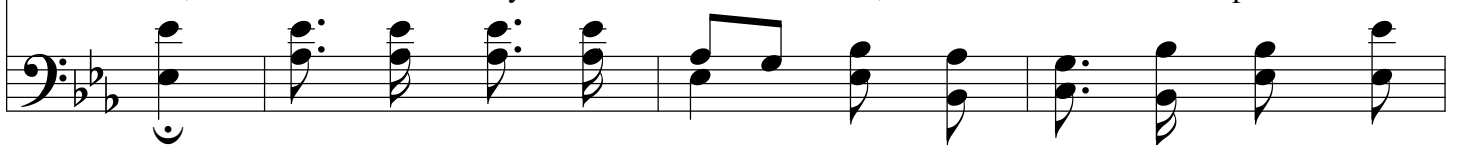


dark - ness in - to light, Look - ing un - to Je - sus makes it right, all right.

Chorus



Oh, look a - way to Je - sus, When sor - row press - es



Looking Unto Jesus Makes It Right

D. S. al Fine

The image shows a musical score for the hymn 'Looking Unto Jesus Makes It Right'. It consists of two staves: a treble clef staff for the vocal line and a bass clef staff for the piano accompaniment. The key signature is two flats (B-flat and E-flat), and the time signature is 4/4. The vocal line begins with a half note G4, followed by a quarter note A4, and then a series of quarter notes: B4, A4, G4, F4, E4, D4, C4, B3, A3, G3, F3, E3, D3, C3. The piano accompaniment starts with a half note G3, followed by a quarter note A3, and then a series of quarter notes: B3, A3, G3, F3, E3, D3, C3, B2, A2, G2, F2, E2, D2, C2. The lyrics are: 'sore, And when temp - ta - tions gath - er thick, Keep look - ing all the more.' The score ends with a double bar line and a repeat sign.

sore, And when temp - ta - tions gath - er thick, Keep look - ing all the more.