

# Look Away To The Cross

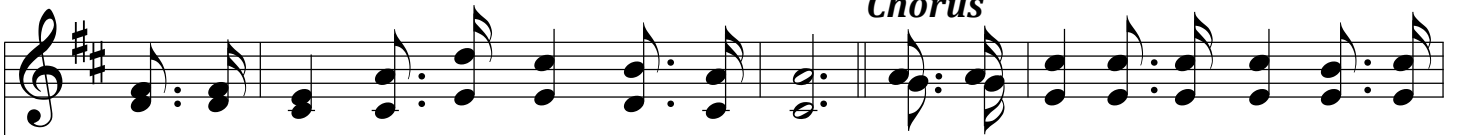
D



1. Look a - way to the cross, leave thy bur - dens all there, All the sins that con -  
2. Look a - way to the cross, leave thy bur - dens all there, In the course of the  
3. Look a - way to the cross, leave thy bur - dens all there, At the cross where thy

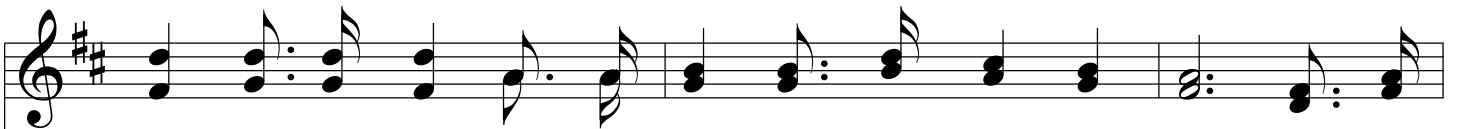


demn, all the wrong, All thy bit - ter re - morse, all thy grief and de - spair;  
swift com - ing years, He will give need - ed grace, all thy trou - bles will bear,  
Sav - ior has died; All thy sins He will par - don, thy sor - row He'll share,



## Chorus

Look a - way to the cross and be strong.  
And like clouds He will scat - ter thy fears. Look a - way to the cross, it will  
And for all of thy wants will pro - vide.



ease thee of care, And the shad - ows will leave thy soul; Look a -



# *Look Away To The Cross*

way to the cross, hum-bly kneel-ing in prayer, On-ly Christ can make thee whole.

The image shows a musical score for the hymn "Look Away To The Cross". It consists of two staves: a treble clef staff for the melody and a bass clef staff for the accompaniment. The key signature is one sharp (F#), and the time signature is 4/4. The lyrics are written below the treble staff. The melody is composed of eighth and quarter notes, while the accompaniment features a steady bass line with chords. The piece concludes with a double bar line.