

The Watchman's Cry



1. Hark, 'tis the watch-man's cry: Wake, breth-ren, wake, Je - sus our Lord is nigh;
 2. Call to each wak - ing band, Watch, breth-ren, watch; Clear is our Lord's com-mand,
 3. Hear we the Sav - ior's voice, Pray, breth-ren, pray! Would ye His heart re - joice?
 4. Now sound the fi - nal chord, Praise, breth-ren, praise! Thrice ho - ly is the Lord;

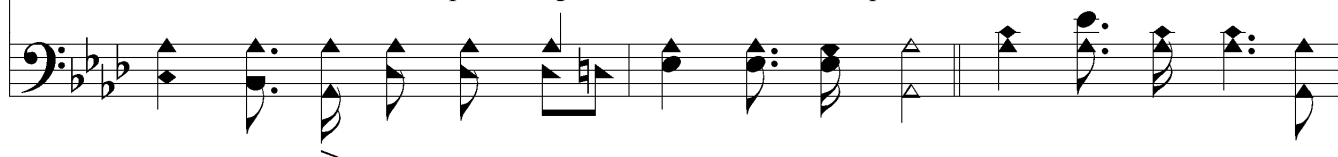


Wake, breth - ren, wake! Sleep is for sons of night; Ye are the sons of light;
 Watch, breth - ren, watch. Be ye as they that wait, Close at the Bride-groom's gate;
 Pray, breth - ren, pray. Sin calls for con-stant fear; We need the strong One near;
 Praise, breth - ren, praise! What more be - fits the tongues, We'll join the an - gels songs,



Chorus

Yours is the glo - ry bright - Wake, breth - ren, wake! Wake,
 E'en tho' He tar - ry late, Watch, breth - ren, watch. Watch,
 Long as we strug - gle here, Pray, breth - ren, pray. Pray, breth - ren, wake, ring
 While heav'n the note pro - longs, Praise, breth - ren, praise! Praise,



out the bat - tle cry, Wake, breth - ren, wake, the vic - to - ry is nigh, Wake, breth - ren,



The Watchman's Cry

wake, We'll con-quer in the fight, Shout-ing hal-le-lu-jah! for the truth and right.

The image shows a musical score for the hymn 'The Watchman's Cry'. It consists of two staves: a treble clef staff on top and a bass clef staff on the bottom. The key signature is three flats (B-flat, E-flat, A-flat), and the time signature is 4/4. The melody is written in the treble staff, and the bass line is in the bass staff. The lyrics are placed between the two staves, aligned with the notes. The melody features a prominent eighth-note pattern in the first half and a more active eighth-note line in the second half. The bass line provides a steady accompaniment with a mix of quarter and eighth notes.