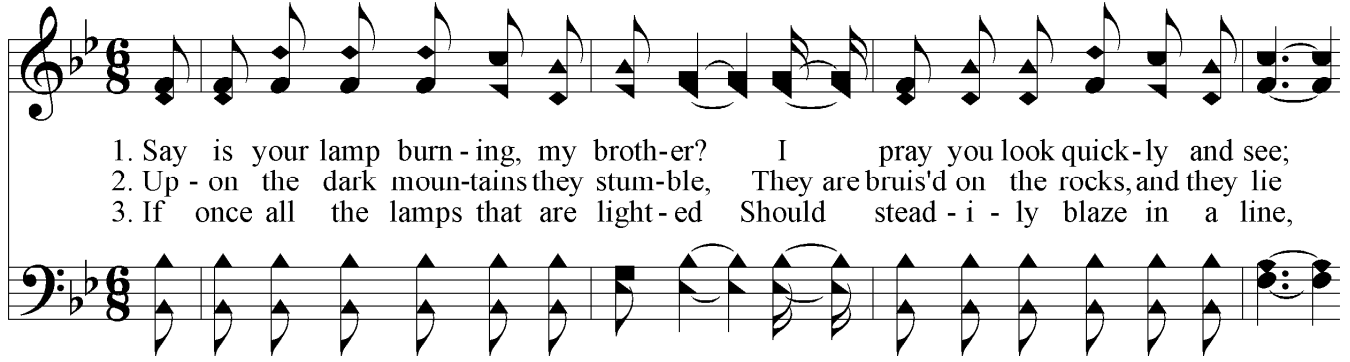
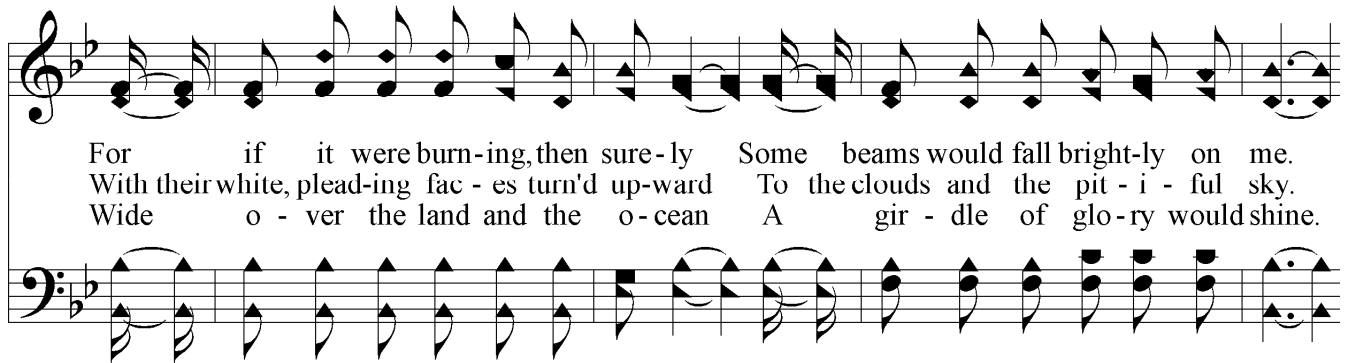


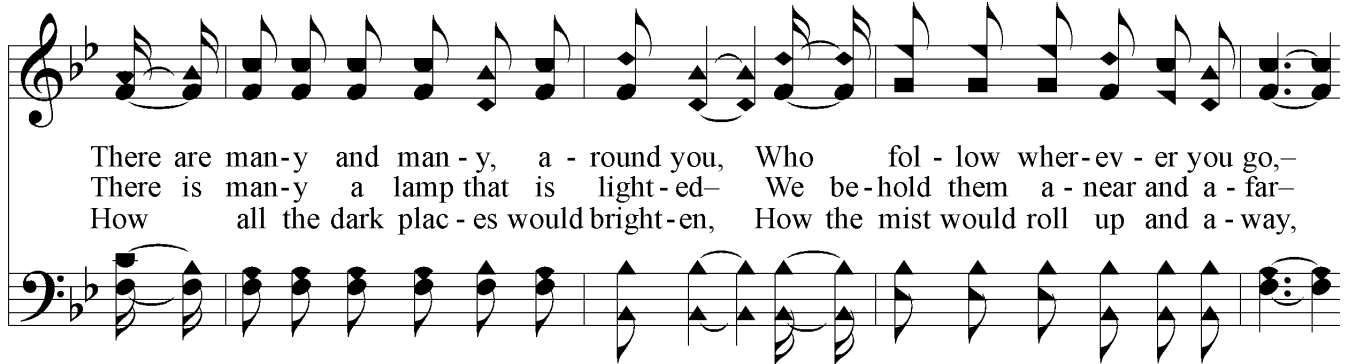
Is Your Lamp Burning?



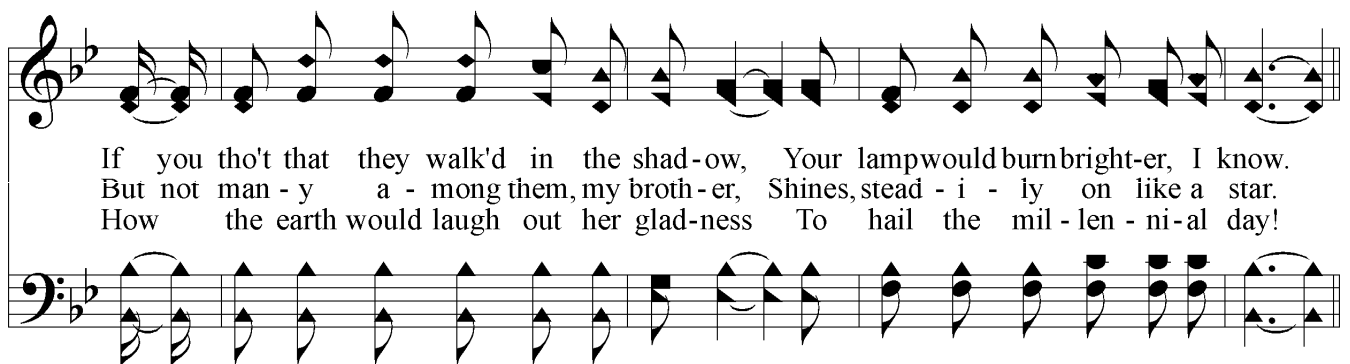
1. Say is your lamp burn - ing, my broth - er? I pray you look quick - ly and see;
2. Up - on the dark moun - tains they stum - ble, They are bruise'd on the rocks, and they lie
3. If once all the lamps that are light - ed Should stead - i - ly blaze in a line,



For if it were burn - ing, then sure - ly Some beams would fall bright - ly on me.
With their white, plead - ing fac - es turn'd up - ward To the clouds and the pit - i - ful sky.
Wide o - ver the land and the o - cean A gir - dle of glo - ry would shine.



There are man - y and man - y, a - round you, Who fol - low wher - ev - er you go -
There is man - y a lamp that is light - ed - We be - hold them a - near and a - far -
How all the dark plac - es would bright - en, How the mist would roll up and a - way,



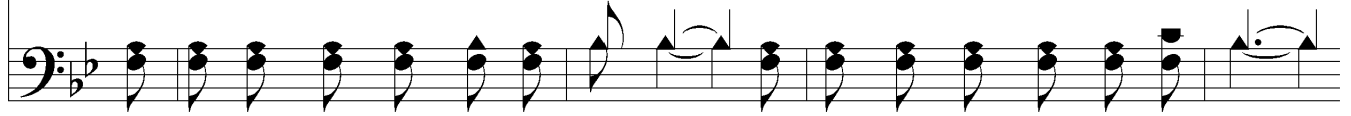
If you tho't that they walk'd in the shad - ow, Your lamp would burn bright - er, I know.
But not man - y a - mong them, my broth - er, Shines, stead - i - ly on like a star.
How the earth would laugh out her glad - ness To hail the mil - len - ni - al day!

Is Your Lamp Burning?

Refrain



Say, is your lamp burn-ing, my both-er? I pray you look quick-ly and see;



For if it were burn-ing, then sure-ly Some beams would fall bright-ly on me.

