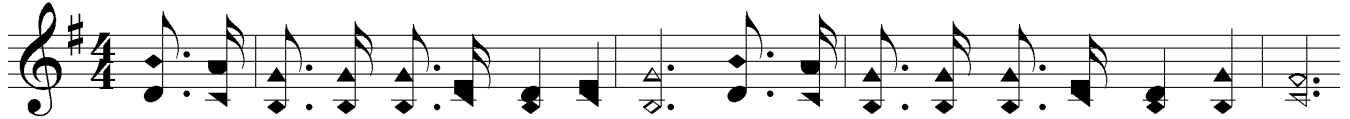


# Can The Lord Depend On You



1. In the ar - my of the King of kings There's a call for sol - diers brave and true,  
 2. In the ser - vice of the King of kings, Who will at the Mas - ter's bid - ding haste?  
 3. Loy - al ev - er to the King of kings, On His busi - ness ev - 'ry day in - tent,  
 4. At the bid - ding of the King of kings, We'll as - sem - ble in the bye and bye,



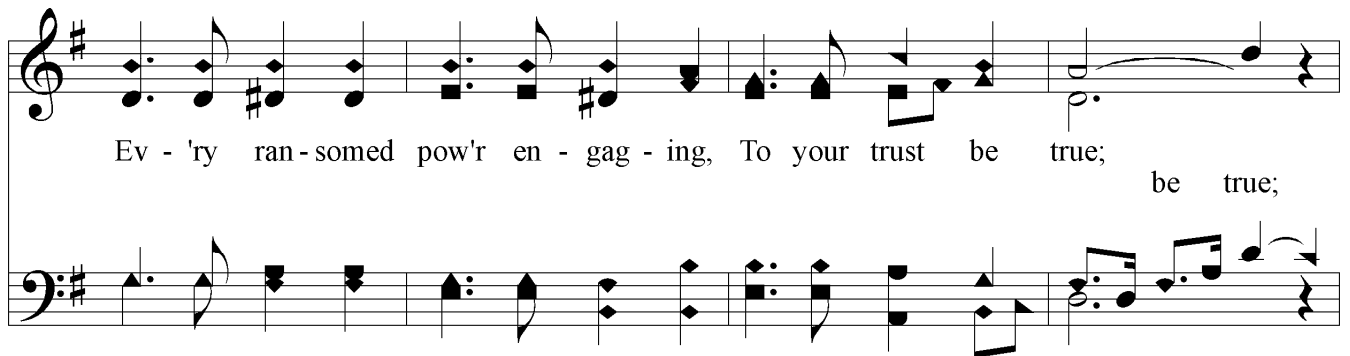
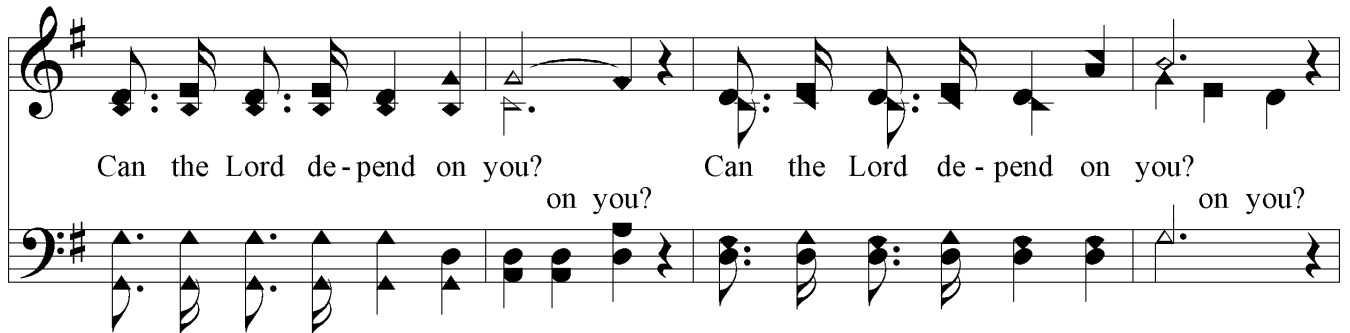
Her - alds of the gos - pel light, At the bat - tle's front to fight; For this ser - vice  
 There is work that must be done Ere this world for Christ is won; For the want of  
 Num - bered with the faith - ful few His am - bas - sa - dors are you, Cry - ing out to  
 With the o - ver - com - ers there Will you meet Him in the air, With the ran - somed

*Emphatic*



can the Cap - tain count on you? For this ser - vice can the Cap - tain count on you?  
 reap - ers gold - en har - vests waste, For the want of reap - ers gold - en har - vests waste.  
 sin - ners ev - 'ry - where, "Re - pent!" Cry - ing out to sin - ners ev - 'ry - where, "Re - pent!"  
 reign in glo - ry up on high? With the ran - somed reign in glo - ry up on high?

## Chorus



# Can The Lord Depend On You

Can the Lord de - pend on you? on you? Can the Lord de - pend on you? on you?

*Rit...*

In the might - y con - flict rag - ing, Can the Lord de - pend on you?

The image shows a musical score for the hymn "Can The Lord Depend On You". It consists of two systems of music. Each system has a vocal line (treble clef) and a piano accompaniment line (bass clef). The key signature is one sharp (F#), and the time signature is 4/4. The first system contains the lyrics "Can the Lord de - pend on you? on you? Can the Lord de - pend on you? on you?". The second system begins with a "Rit..." marking and contains the lyrics "In the might - y con - flict rag - ing, Can the Lord de - pend on you?". The piano accompaniment features chords and melodic lines that support the vocal melody.